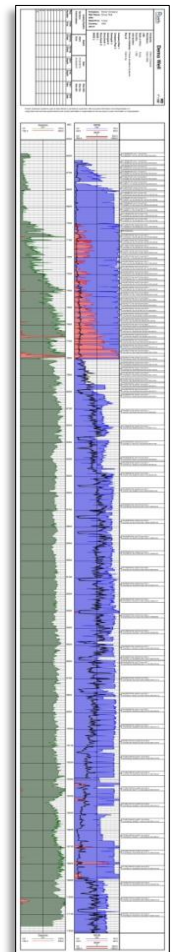
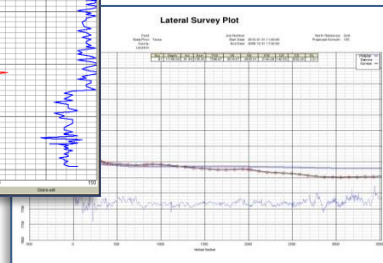
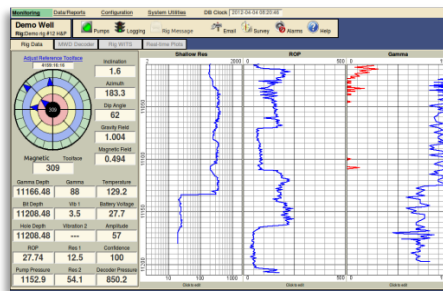


Polaris Laptop Logging System

WITSML
Certified!



All of the great directional and MWD data logging features of the Polaris RDS pre-installed on a laptop. In addition to the laptop the system also includes a serial port interface packaged in a rugged carrying case. Users access the software using a standards-compliant WEB browser. It is easily deployed with minimal user training. The WEB browser interface to the RDS is intuitive and easy to master with all the functionality of conventional desktop applications without all the complicated menus and procedures.



Standard industry-required features include:

- Compatible with all major brand MWD decoding systems
- Fully compatible with all WITS based Rig Monitoring Systems (or EDR)
- Full LAS file export and import functionality
- Log plots in PDF format and plot on roll paper plotters
- Complete selection of detailed survey plots and reports
- Full-featured data editor and scaling functions
- Easily create backup files for safe storage

Additional features include:

- Automatic data synchronization to client's **WITSML** server for the most accurate and up-to-date information
- User definable plot configurations for easy report management
- Detailed survey plots which can include well planning data for as-built reporting and gamma ray overlays
- Built-in Email contact management for sending predefined plots, survey reports, LAS export files or other data to off-site personnel
- Automatic re-logging and a variety of other time saving features
- Survey on connection for un-attended operation

About WITSML:

WITSML (Wellsite Information Transfer Standard Markup Language) is a petroleum industry standard way of sharing drilling related technical data among various organizations. It is non-proprietary open standard based on XML technology that was specifically created to share data in a format that is both human and machine readable. By utilizing WITSML, vendors/organizations share information in pseudo real time without having to deal with incompatible data formats and software. With enabling of data push from RDS using WITSML, all collected data can be transmitted to client's WITSML server.

Features of the WITSML module include:

- RDS can push data to the clients in near real time, securely and automatically
- Data pushed per WITSML specification with built in data transmission error correction
- Survey and Depth Logs transmitted to as many as four independent destinations
- Automatically re-transmit all data corrections from rig site including surveys and logs for complete synchronization
- Simple configuration – all that is needed is login information to the destination WITSML server
- Extensively tested with industry leading WITSML vendors
- Time Log data push for near real-time monitoring